

## Kitchen cupboard watercolour challenge!



The materials for this session were created for a Colourwheel student who did not have access to brushes or watercolours.

In this photo there are 3 kitchen cupboard Ingredients from the top:

- Lawn grass in green tea
- Beetroot juice
- Coffee (filter and instant!)



A piece of a washing-up sponge cut into a wedge with a sharp tip (I made this one about the size of the tip of my thumb).

Sponges hold lots of water so it doesn't need be much bigger unless you are making a very large painting.

Start by applying a layer of beetroot juice and let it dry. You might see a change in the colour from red tones to bluer toners- this can be down to the reaction of the vinegar and the paper.

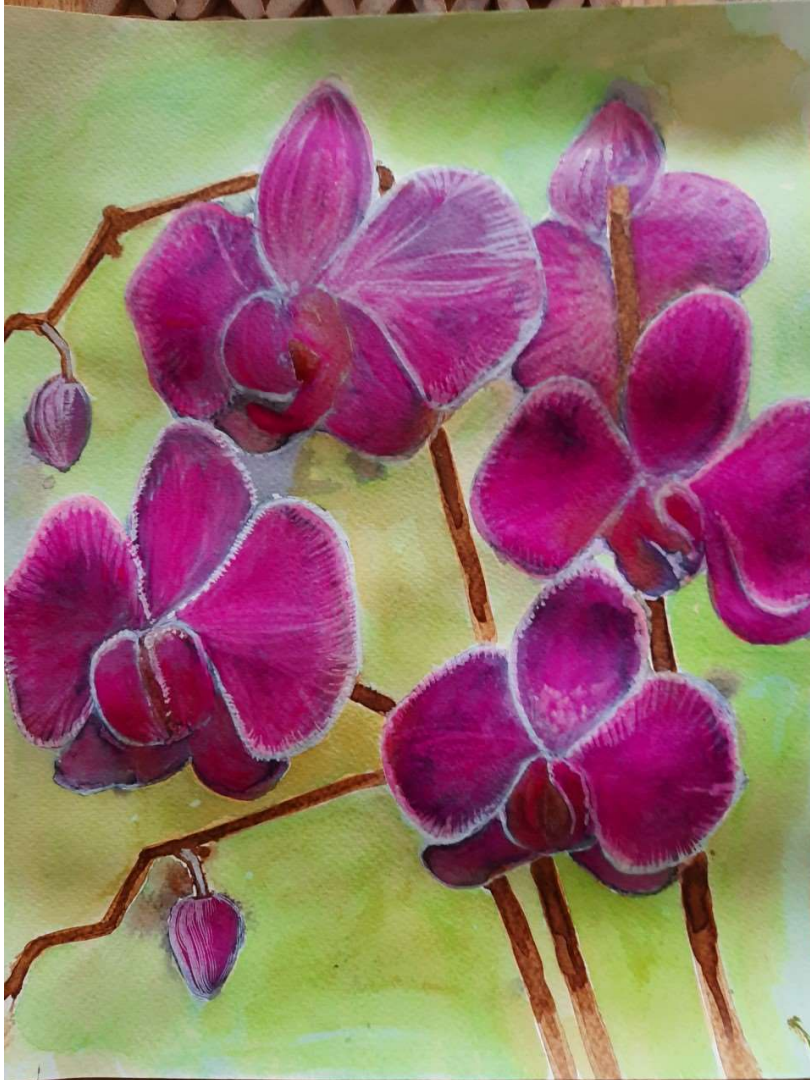


After you have put a layer of flower petals (with the sponge it's quite quick)

use the tip of the sponge apply coffee as the stalks of the flowers.

It's all about layers and waiting for them to dry- a hair drier or sunshine helps!

Remember- the more layers you apply to an area, the darker the value of the colour. Think ahead- if an area is very light leave just one layer on- it's easy to add, difficult to take away!



I applied a layer of green tea/grass mix to get a background but I have to confess....

I used a yellow Watercolour to boost it!

I also used China White to add light to the petals...

and the secret of the pink is.....

is VIMTO!